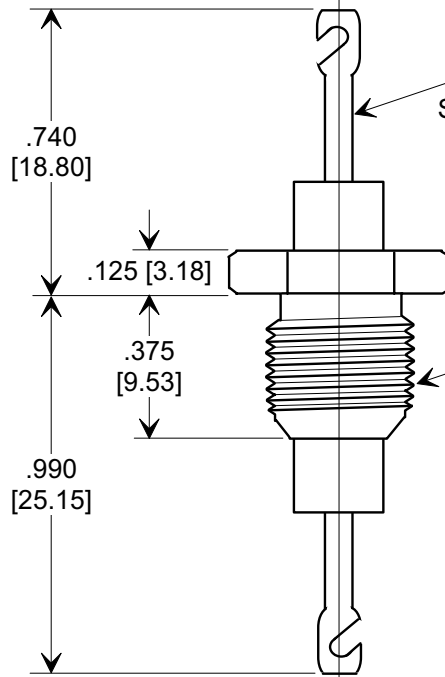
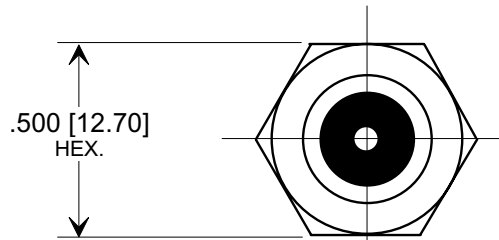
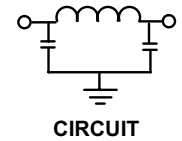
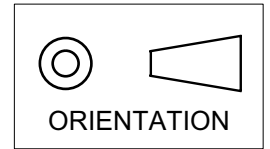


**MARKETING SALES DRAWING**  
**DIMENSIONS IN INCHES - DO NOT SCALE THIS DRAWING**

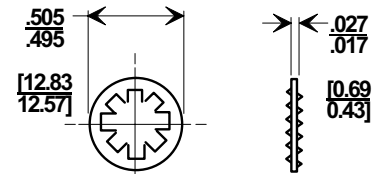
Electrical Testing  
 per Tusonix standard  
 test plans and Mil-Std-202  
 Test Methods.



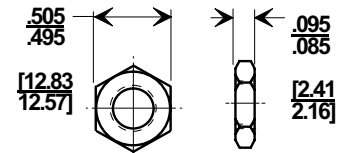
#15 AWG (.057 [1.45])  
 SILVER PLATED COPPER, TINNED.

BUSHING  
 3/8-32 UNEF-2A  
 SILVER PLATED  
 BRASS

**MOUNTING HARDWARE**



LOCK WASHER



HEX NUT

**NOTES:**

- TUSONIX STANDARD PART NUMBER: 4208-000.  
 TUSONIX RoHS COMPLIANT PART NUMBER: 4208-000 LF.  
 CUSTOMER MUST SPECIFY STANDARD OR RoHS PART NUMBER  
 WHEN ORDERING.
- SUPPLIED WITH SILVER PLATED LOCK WASHER AND NUT.
- PART MARKING: TRADEMARK AND VARIATION NUMBER ON HEX FLATS.  
 STANDARD PART: BLACK INK. RoHS PART: GREEN INK.

MIN. Cx.	WORKING VOLTAGE		DWV (VDC)	CURRENT IDC	MINIMUM NO LOAD INSERTION LOSS (dB) AT 25°C PER MIL-STD-220			
	85° C	125° C			10MHz	100MHz	1GHz	10 GHz
1500 pF	2500	2000	5 KV	25A	5	50	50	50

X-2015 Rev-0 <b>REVISION RECORD</b>	0	Original Release C.O.	1	REISSUE -375 DIM. WAS .347. KLJ. 5-4-90	2	ADDED COLUMN (IDC) & HARDWARE. E.C. 07-03-90	3	RDN TO COMP FMT & METRIC ADDED. S.M. 05-28-02	4	20020523-4-10	5	20050718-5-02	--TOLERANCES-- Unless Otherwise Specified DECIMAL ± .031 [0.79] ANGLES ±	Title <b>HI-VOLTAGE EMI FILTER</b>	
	1	WAS SK 6959-000. KLJ 5-1-90	2	ADDED COLUMN (IDC) & HARDWARE. E.C. 07-03-90	3	RDN TO COMP FMT & METRIC ADDED. S.M. 05-28-02	4	20020523-4-10	5	20050718-5-02	Drawn S.M. 05-28-02 Scale 2X				
	2	ADDED COLUMN (IDC) & HARDWARE. E.C. 07-03-90	3	RDN TO COMP FMT & METRIC ADDED. S.M. 05-28-02	4	20020523-4-10	5	20050718-5-02	Approved J.Mc. 05-28-02	<b>TUSONIX</b> TUCSON, ARIZONA		<b>A</b>	<b>4208-000</b>		
	3	RDN TO COMP FMT & METRIC ADDED. S.M. 05-28-02	4	20020523-4-10	5	20050718-5-02	Title <b>HI-VOLTAGE EMI FILTER</b>								
	4	20020523-4-10	5	20050718-5-02	Title <b>HI-VOLTAGE EMI FILTER</b>		Approved J.Mc. 05-28-02		<b>TUSONIX</b> TUCSON, ARIZONA		<b>A</b>	<b>4208-000</b>			