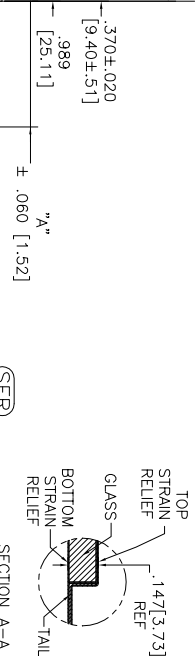
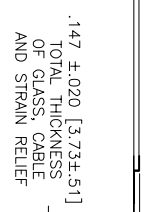
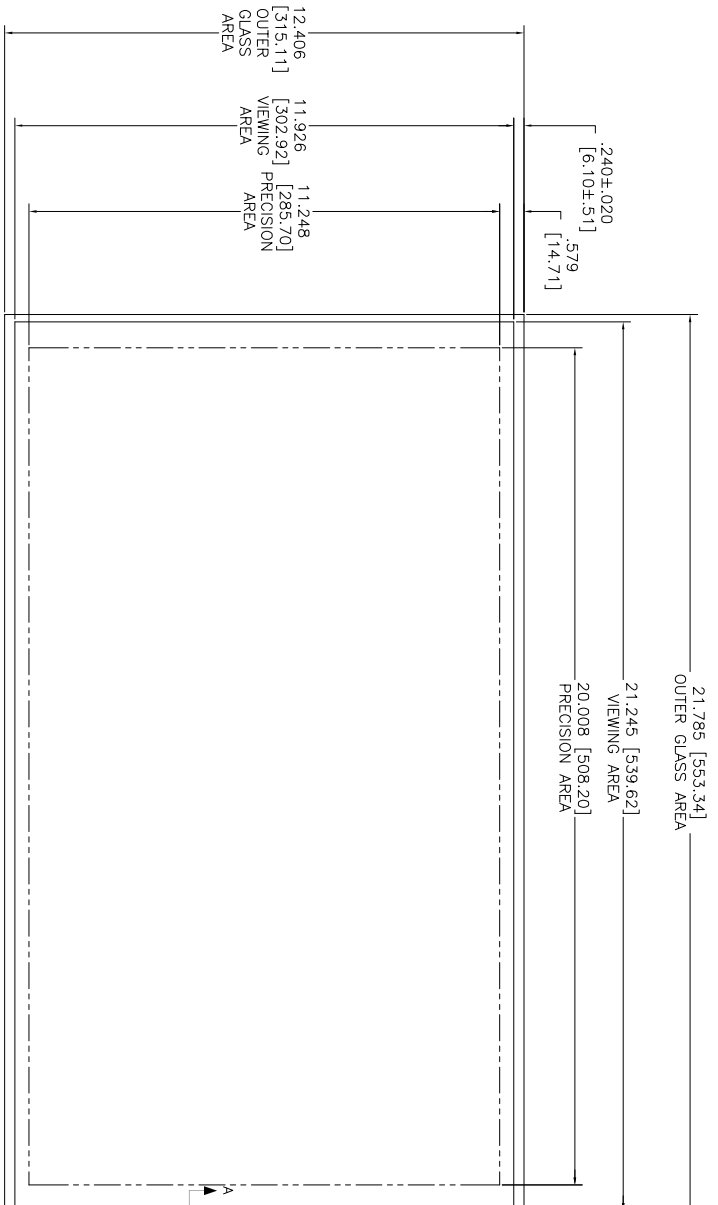


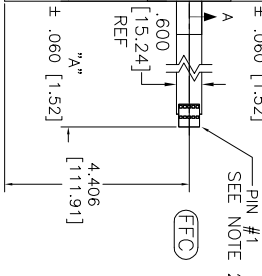
OGA DIAGONAL: 25.07 [636.77]
 VA DIAGONAL: 24.36 [618.83]
 PA DIAGONAL: 22.95 [583.00]

TOP LEVEL NUMBER	US NUMBER	TYPE	DM "A" (TOTAL GLASS TO CONNECTOR)	A/G FINISH	PROD SPEC
17-9011-226	98-0003-3795-1	USB R	8.00" [203.20]	AG500	23655
N/A	98-0003-3794-3	SER	8.00" [203.20]	WC100	34523
N/A	98-0003-3875-0	SER	8.00" [203.20]	AG500	23655
N/A	98-0003-3876-8	FFC	8.00" [203.20]	AG500	23655
N/A	98-0003-4215-8	USB R	8.00" [203.20]	WC100	34523
N/A	98-1100-0092-8	FFC	8.00" [203.20]	WC100	34523



(SER) EXII-7720SC
 98-0003-2217-6
 SERIAL CONTROLLER
 SOLDER SIDE

(USB R) EXII-7769UC
 98-0003-2815-7
 USB CONTROLLER
 SOLDER SIDE



ESD CLAMSHELL CASE
 IS USED WITH USB
 AND SER ERMINATIONS.



REV	DATE	BY	CHK	APP	DESCRIPTION
H	4/13	SB			REVISE PER CO 036296
G	2/13	SB			REVISE PER CO 036101
F	9/12	SB			REVISE PER CO 035430
REV	DATE	BY	CHK	APP	DESCRIPTION

MARKETING DRAWING
 SCT32NN 24.36" W

UNITS: INCHES [MM]

TOLERANCES UNLESS OTHERWISE SPECIFIED

X ±.03 [.76]
 .XX ±.015 [.38]
 .XXX ±.015 [.38]
 ANGLES 4:1

THIS DOCUMENT IS THE PROPERTY OF 3M TOUCH SYSTEMS, INC., WAUSAU, WI, USA. IT IS TO BE USED ONLY FOR THE PROJECT AND FOR WHICH IT WAS PREPARED. NO OTHER USE OR REPRODUCTION IS PERMITTED WITHOUT THE WRITTEN PERMISSION OF 3M TOUCH SYSTEMS, INC.

DATE: 6/09

DESIGNER: AH

PINOUT
1 UL
2 UR
3 SHLD
4 LR
5 LL

NOTES:

1. WEIGHT OF GLASS IN GRAMS: 1384±10%
2. NICOMATIC HOUSING P/N: OLO5
3. NICOMATIC RECEPTACLES (PINS) MATTE TIN PLATED P/N: 14106-12
4. HOUSING ORIENTED WITH LATCH DOWN

DO NOT SCALE DRAWING

SCALE: 1 = 1

3M TOUCH SYSTEMS

3M TOUCH SYSTEMS, INC., WAUSAU, WI, USA

Copyright 2004

THIS DOCUMENT IS THE PROPERTY OF 3M TOUCH SYSTEMS, INC., WAUSAU, WI, USA. IT IS TO BE USED ONLY FOR THE PROJECT AND FOR WHICH IT WAS PREPARED. NO OTHER USE OR REPRODUCTION IS PERMITTED WITHOUT THE WRITTEN PERMISSION OF 3M TOUCH SYSTEMS, INC.

DATE: 6/09

DESIGNER: AH

SIZE: C

DOCUMENT NO: TSD-37090

SHEET: 1 OF 1

REV: H