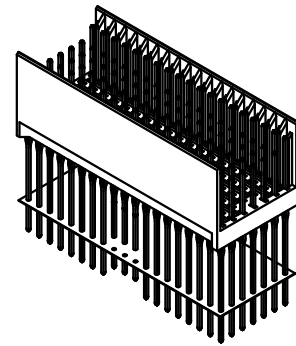
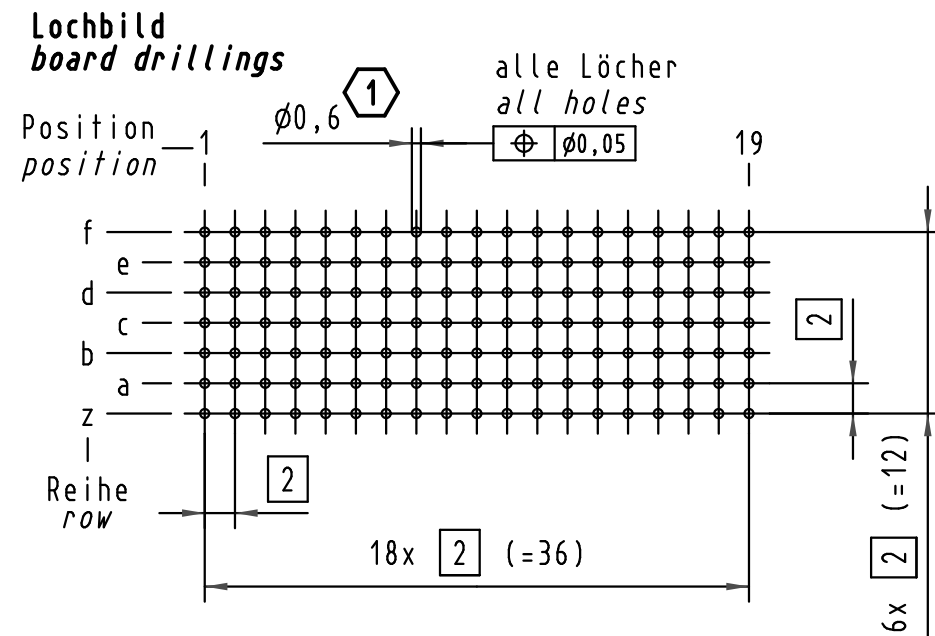
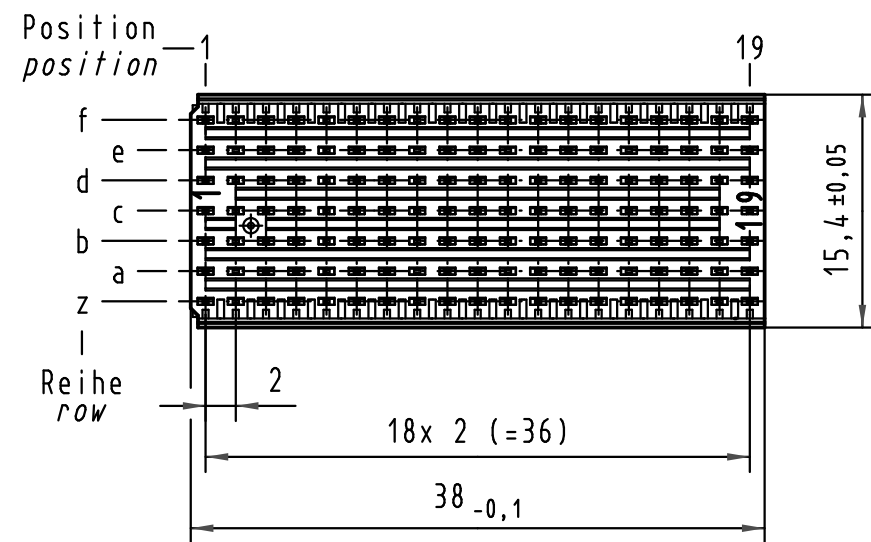
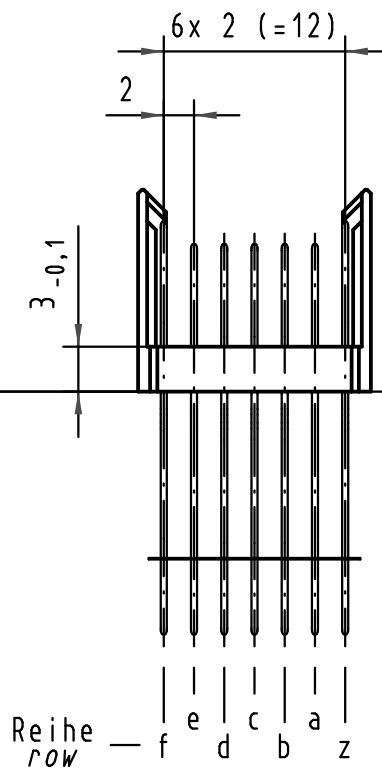
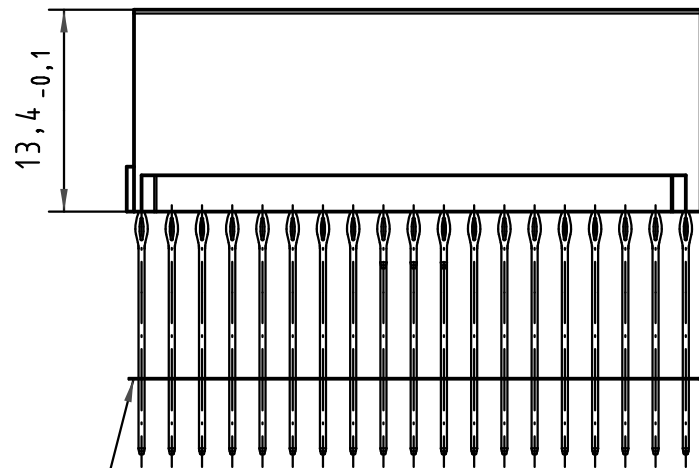
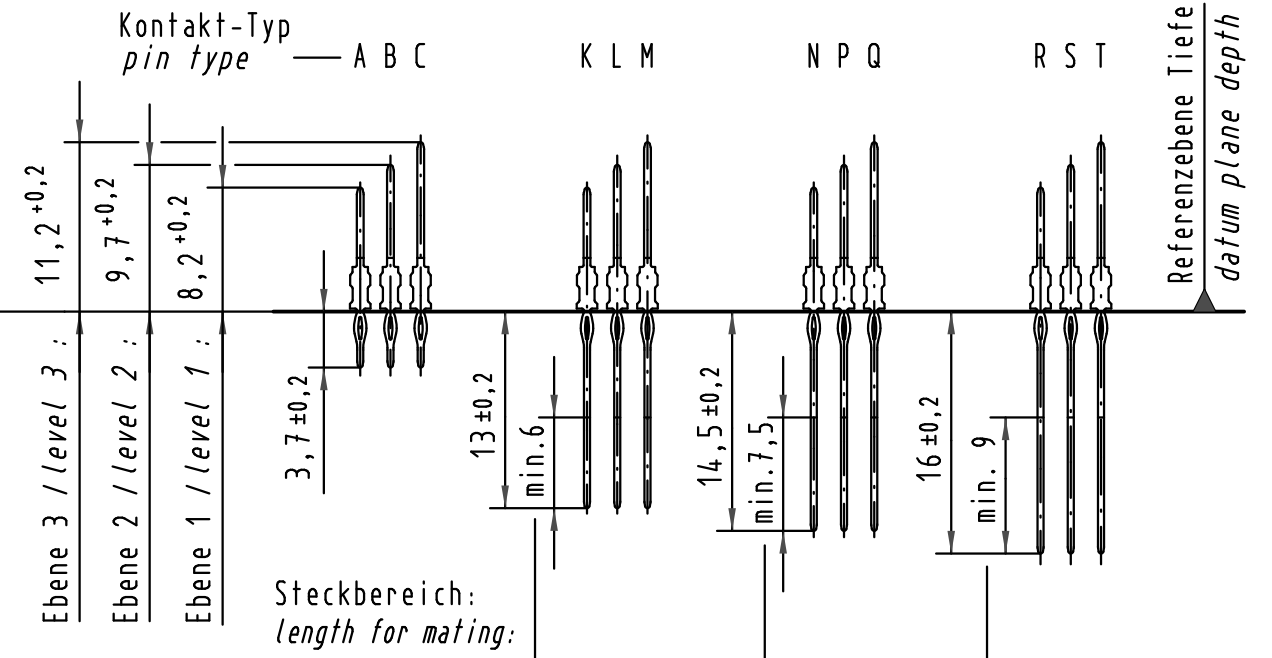


Alle Rechte vorbehalten/ All rights reserved



Kontakt-Maße
contact dimensions

(Längen der Steck- und Anschlußseite gelten für eingepreßte Steckverbinder)
(mating and termination length of contacts apply to pressed in connectors)



Kontaktbelegung
contact loading

f	T	T	T	T	T	T	T	T	C	C	C	T	T	T	T	T	T	T
e	S	S	S	S	S	S	S	S	S	S	S	S	S	S	S	S	S	S
d	S	S	S	S	S	S	S	S	S	S	S	S	S	S	S	S	S	S
c	S	S	S	S	S	S	S	S	S	S	S	S	S	S	S	S	S	S
b	S	S	S	S	S	S	S	S	S	S	S	S	S	S	S	S	S	S
a	S	S	S	S	S	S	S	S	S	S	S	S	S	S	S	S	S	S
z	T	T	T	T	T	T	T	T	C	C	C	T	T	T	T	T	T	T
	1	3	5	7	9	11	13	15	17	19								
	2	4	6	8	10	12	14	16	18									

Empfohlener Lochaufbau und weitere Informationen siehe: DS 17 00 110 0101
recommended configuration of plated through holes and further information see: DS 17 00 110 0101

17 05 133 4005	S4
17 05 133 2005	2
17 05 133 1005	1
Bestell-Nr. part-no.	Anforderungsstufe performance level 1

		Techn. Character.			Nicht tolerierte Maß/Free size tolerances IEC 61076-4-101	
		Dat.	Name	Maßstab/Scale	har-bus HM Messerleiste Typ B-19 133pol., Anschlußlänge 3,7mm und 16mm har-bus HM male connector type B-19 133pol., termination length 3,7mm and 16mm	
		Detail.	17.12.99 HL.	2:1		
35967	08.01.10 Hage.	Insp.	17.12.99 Pa.			
34337	22.05.07 Cla	Stand.				
29392	14.03.01 Rie.	HARTING Electronics GmbH & Co. KG			TB 17 05 133 x005	
26988		D-32339 ESPELKAMP				
Mod.	Dat.	Name			Sub.	Blatt/page